

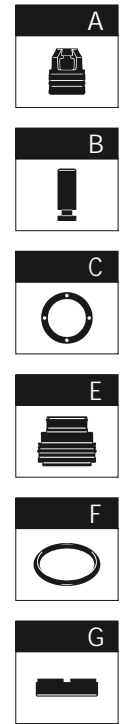
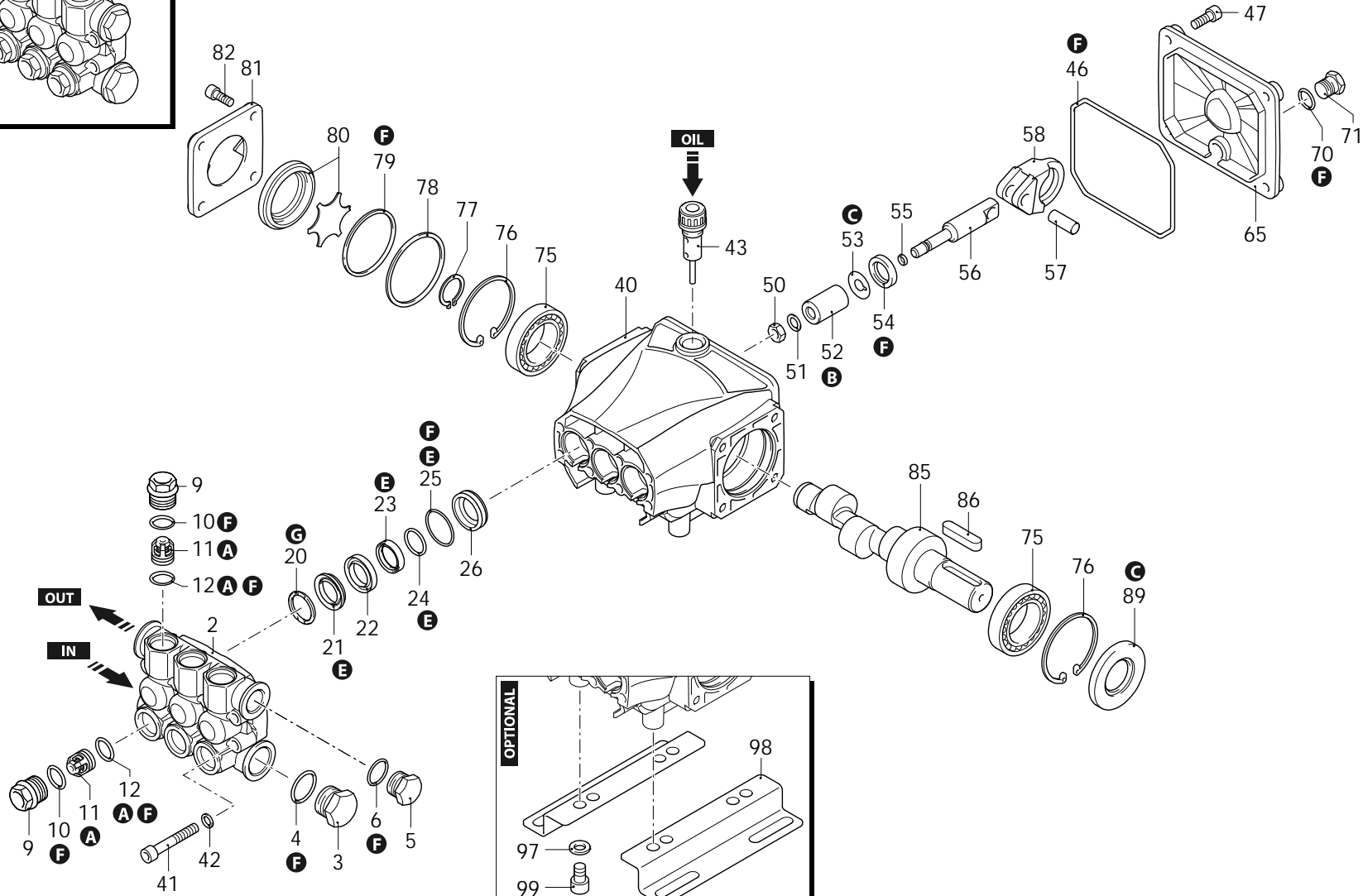
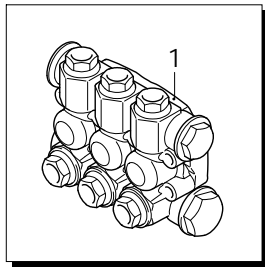


Series 320
RC-M

N

1450rpm

ø 24mm



AR-1_000029_v01

29/11/2021



Series 320
RC-M

N

1450rpm

Ø 24mm

| P | Code | Description | Q | Note | Validity | P | Code | Description | Q | Note | Validity |
|----|---------|----------------|----------------|------|-------------------------------------|----|---------|--------------------|--------------|------|----------------------------------|
| 1 | 3209202 | Head assembly | Ø 15 | 1 | | 78 | 3201860 | Ring | Ø 51,8x0,5 | 1 | |
| 2 | 3200100 | Head | | 1 | | 79 | 395081 | O-ring | Ø 47,30x2,62 | 1 | |
| 3 | 820361 | Plug | 1/2" G brass | 1 | C=40Nm | 80 | 3209615 | Oil level assembly | | 1 | |
| 4 | 180101 | O-ring | Ø 17,5x2 | 1 | Lubricate with grease Molykote PG54 | 81 | 3200070 | Support | | 1 | |
| 5 | 1980740 | Plug | 3/8" G brass | 1 | C=20Nm | 82 | 1200430 | Screw | TCEI M6x16 | 8 | Screw with Loxeal 55-14 / C=10Nm |
| 6 | 740290 | O-ring | Ø 14x1,78 | 1 | Lubricate with grease Molykote PG54 | 85 | 3200410 | Shaft | 14 marked | 1 | |
| 9 | 3200110 | Plug | | 6 | Screw with Loxeal 55-14 / C=24,5Nm | 86 | 3200230 | Key | | 1 | |
| 10 | 1200690 | O-ring | Ø 15,6x1,78 | 6 | Lubricate with grease Molykote PG54 | 89 | 1260750 | Ring | seal | 1 | Assemble with tool [1941990] |
| 11 | 3209050 | Complete valve | | 6 | | 97 | 1322640 | Washer | | 4 | |
| 12 | 394280 | O-ring | Ø 12,42x1,78 | 6 | Lubricate with grease Molykote PG54 | 98 | 3200210 | Foot | | 2 | |
| 20 | 2760220 | Ring | support Ø 15 | 3 | | 99 | 850250 | Screw | TCEI M8x12 | 4 | C=24,5Nm |
| 21 | 1342761 | Water seal | Ø 15 | 3 | Lubricate with grease Molykote PG54 | A | 42494 | Valve kit | | 1 | |
| 22 | 3200160 | Piston guide | front Ø 15 | 3 | | B | 42475 | Piston kit | Ø 15 | 1 | |
| 23 | 3200690 | Gasket | Ø 15 | 3 | Lubricate with grease Molykote PG54 | C | 42468 | Oil seal kit | | 1 | |
| 24 | 3200700 | Ring | anti-extrusion | 3 | | E | 42476 | Water seal kit | Ø 15 | 1 | |
| 25 | 770590 | O-ring | Ø 21,95x1,78 | 3 | Lubricate with grease Molykote PG54 | F | 42495 | Gasket kit | | 1 | |
| 26 | 3200150 | Piston guide | rear Ø 15 | 3 | | G | 2191 | Support ring kit | Ø 15 | 1 | |
| 40 | 3200010 | Pump body | | 1 | | | | | | | |
| 41 | 800410 | Screw | TCEI M6x40 | 8 | C=10,4Nm | | | | | | |
| 42 | 1381550 | Washer | | 8 | | | | | | | |
| 43 | 3201890 | Plug | | 1 | | | | | | | |
| 46 | 2760280 | O-ring | Ø 101,27x2,62 | 1 | | | | | | | |
| 47 | 3200220 | Screw | TCEI 6x16 | 4 | C=8Nm | | | | | | |
| 50 | 1260110 | Nut | M8 | 3 | Screw with Loxeal 55-14 / C=12Nm | | | | | | |
| 51 | 1260100 | Washer | | 3 | | | | | | | |
| 52 | 1260120 | Piston | Ø 15 | 3 | | | | | | | |
| 53 | 1260091 | Plate | | 3 | | | | | | | |
| 54 | 1260460 | Oil seal | | 3 | | | | | | | |
| 55 | 480480 | O-ring | Ø 4,48x1,78 | 3 | | | | | | | |
| 56 | 3200060 | Piston | guide | 3 | | | | | | | |
| 57 | 1780050 | Pin | | 3 | | | | | | | |
| 58 | 3200040 | Connecting-rod | aluminium | 3 | Lubricate with grease Molykote G807 | | | | | | |
| 65 | 3200030 | Cover | | 1 | | | | | | | |
| 70 | 820510 | O-ring | Ø 10,82x1,78 | 1 | | | | | | | |
| 71 | 880581 | Plug | 1/4" G brass | 1 | Screw with Loxeal 55-14 / C=15Nm | | | | | | |
| 75 | 1320370 | Bearing | | 2 | | | | | | | |
| 76 | 1260790 | Ring | seeger Øi 52 | 2 | | | | | | | |
| 77 | 1260770 | Ring | seeger Øe 25 | 2 | | | | | | | |

Revision: 1

Oil type: SAE 15W40

Attachment:

Date: 29/11/2021

Oil quantity: 0,260 Kg

C=Tightening torque (Tolerance +0 ÷ -10%)

23441 - RC-M 01.10 N