



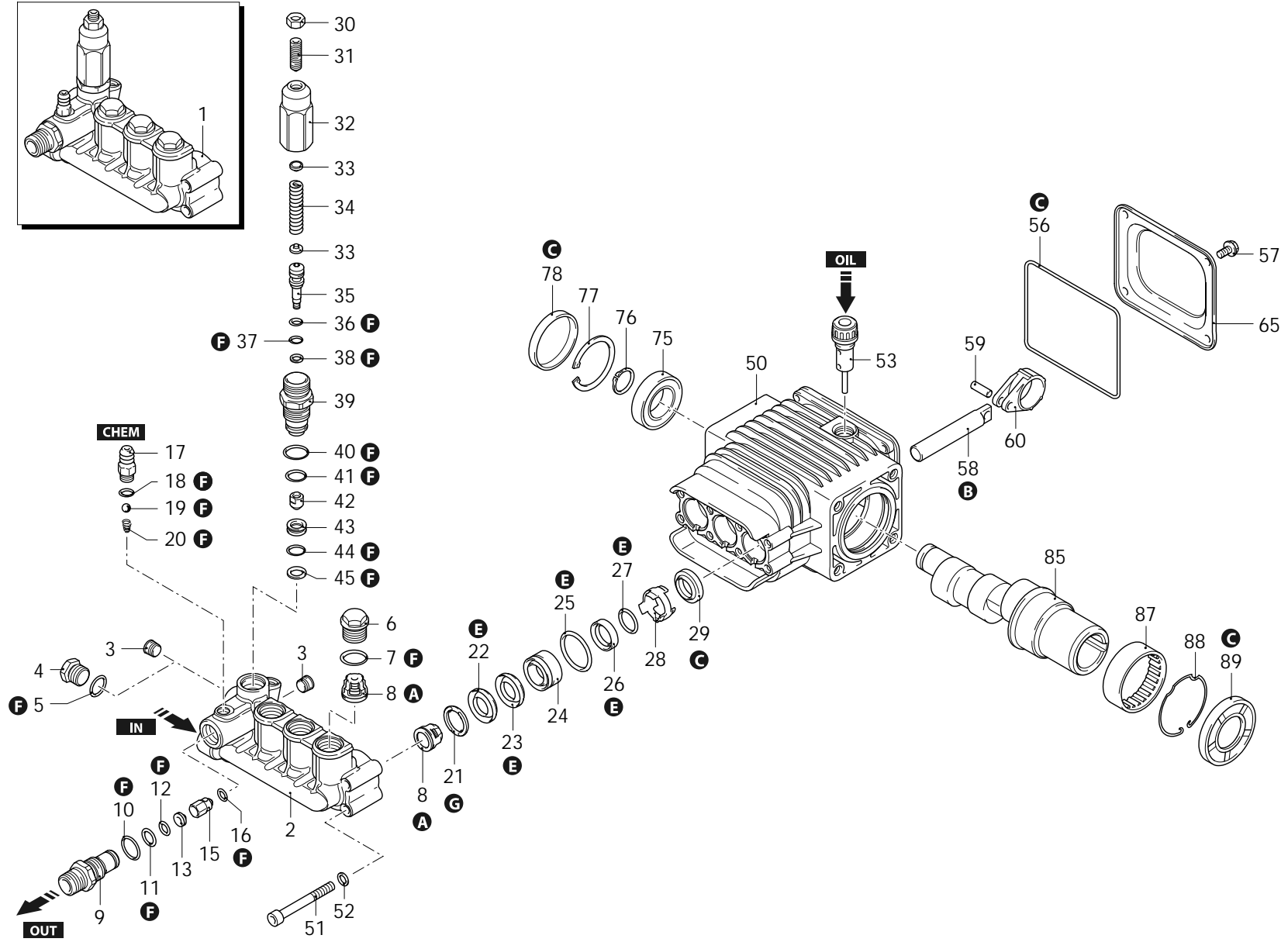
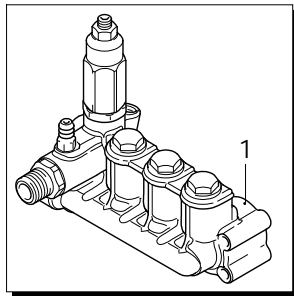
Series 276

RSV

D

3400rpm

ø 3/4"



A
B
C
E
F
G

AR-1\_000006\_v01

29/11/2021



Series 276

RSV

D

3400rpm

Ø 3/4"

P	Code	Description	Q	Note	Validity	P	Code	Description	Q	Note	Validity
1	2769236	Head assembly	Ø 15	1		40	1200690	O-ring	Ø 15,6x1,78	4	Lubricate with grease Molykote PG54
2	2760330	Head	brass	1		41	394280	O-ring	Ø 12,4x1,78	2	Lubricate with grease Molykote PG54
3	2760260	Plug	1/4" G	2	Screw with Loxeal 55-14	42	2260070	Shutter		1	Screw with Loxeal 55-14 / C=3Nm
4	880581	Plug	1/4" G brass	1	Screw with Loxeal 55-14 / C=15Nm	43	2760980	Seat		1	
5	820510	O-ring	Ø 10,82x1,78	1		44	770140	O-ring	Ø 11,11x1,78	1	Lubricate with grease Molykote PG54
6	2760180	Plug		3	Screw with Loxeal 55-14 / C=50Nm	45	2760640	Ring	anti-extrusion	1	
7	1200690	O-ring	Ø 15,6x1,78	3	Lubricate with grease Molykote PG54	50	2760010	Pump body		1	
8	2769050	Complete valve		6		51	801080	Screw	TCEI M6x50	8	C=10,4Nm
9	2760230	Fitting	3/8" G (M)	1	Screw with Loxeal 55-14 / C=40Nm	52	1381550	Washer		8	
10	394280	O-ring	Ø 12,42x1,78	2	Lubricate with grease Molykote PG54	53	880130	Plug		1	
11	2760270	O-ring	Ø 12x1	1	Lubricate with grease Molykote PG54	56	2760281	O-ring		1	
12	1470210	O-ring	Ø 9x1	1		57	802190	Screw	TE 6x12	4	C=8Nm
13	2760120	Injector	Ø 2,0	1		58	2760040	Piston	Ø 15	3	Lubricate with grease Molykote PG54
15	2760130	Shutter		1		59	1780050	Pin		3	
16	2101770	O-ring	Ø 4x2,5	1	90 Sh	60	1780040	Connecting-rod	aluminium	3	Lubricate with grease Molykote BR2 PLUS
17	1982520	Hose tail	Ø 8	1	Screw with Loxeal 55-14 / C=4Nm	65	2760110	Cover		1	
18	480480	O-ring	Ø 4,48x1,78	1		75	1780490	Bearing		1	
19	1250280	Ball		1		76	1780550	Ring	seeger Øe 20	1	
20	1560520	Spring		1		77	1260790	Ring	seeger Øi 52	1	
21	2760220	Ring	support Ø 15	3		78	1266740	Cover		1	
22	1342761	Water seal	Ø 15	3	Lubricate with grease Molykote PG54	85	1780590	Shaft	9 marked	1	
23	1981580	Ring	anti-extrusion	3		87	1321190	Bearing		1	Assemble with tool [1780610]
24	1981570	Piston guide	Ø 15	3	Screw with Loxeal 55-14 / C=35Nm	88	1321080	Ring		1	
25	770260	O-ring	Ø 23,52x1,78	3		89	480671	Ring	seal	1	Assemble with tool [1781000]
26	1260440	Water seal	Ø 15	3	Lubricate with grease Molykote PG54	A	2186	Valve kit		1	
27	640070	O-ring	Ø 13,95x2,62	3		B	2187	Piston kit	Ø 15	1	
28	2760310	Spacer		3		C	2188	Oil seal kit		1	
29	1260460	Oil seal		3		E	2189	Water seal kit	Ø 15	1	
30	1060120	Nut	M6	1		F	2190	Gasket kit		1	
31	392840	Screw	M6x16	1		G	2191	Support ring kit	Ø 15	1	
32	2760480	Insert		1							
33	1980220	Plate		2							
34	2760410	Spring		1	Lubricate with grease Molykote BR2 PLUS						
35	2760400	Piston		1							
36	2260100	O-ring	Ø 6,02x2,62	1	Lubricate with grease Molykote PG54						
37	660190	O-ring	Ø 6,07x1,78	1	Lubricate with grease Molykote PG54						
38	2760210	Ring	anti-extrusion	1							
39	2760050	Piston guide		1	Screw with Loxeal 55-14 / C=35Nm						

Revision: 1

Oil type: SAE 15W40

Attachment:

Date: 29/11/2021

Oil quantity: 0,300 Kg

*C=Tightening torque (Tolerance +0 ÷ -10%)*



Series 276

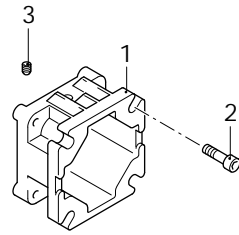
RSV

D

3400rpm

Ø 3/4"

P	Code	Description		Q	Note	Validity
1	1780580	Flange	F25	1		
2	180030	Screw	TCEI M8x20	4	Screw with Loxeal 55-14 / C=24,5Nm	
3	820440	Screw	M6x6	1		



F25

AR-1\_000074\_v01

Revision: 1

Oil type: SAE 15W40

Attachment:

Date: 29/11/2021

Oil quantity: 0,300 Kg

*C=Tightening torque (Tolerance +0 ÷ -10%)*

23473 - RSV 3 G25 D + F25